

3

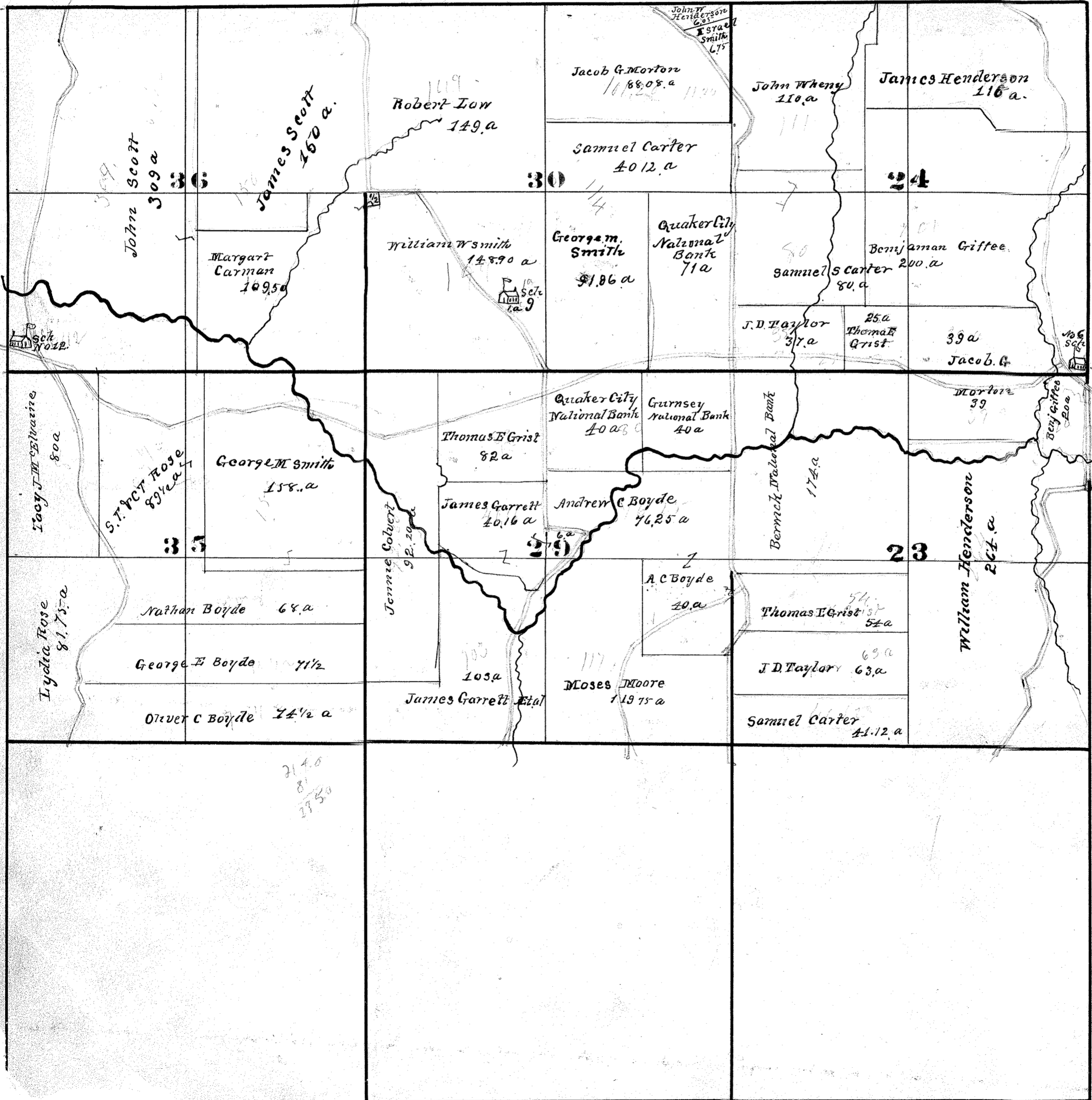
OXFORD

Q_r

Range 7 & SOUTH HALF OF 10

Scale 80 Rods to one inch.

& NORTH PART OF Township. 9



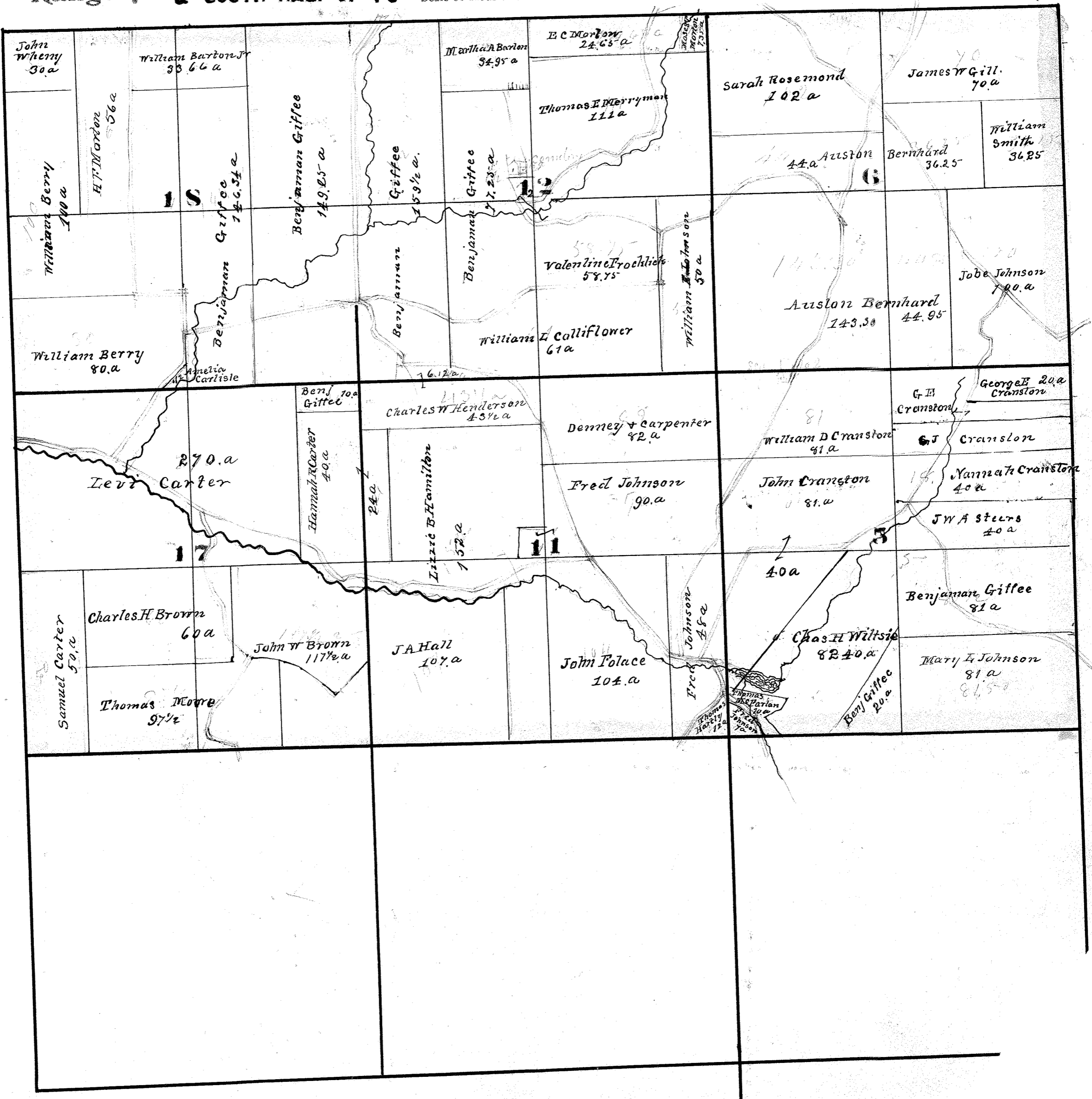
4th

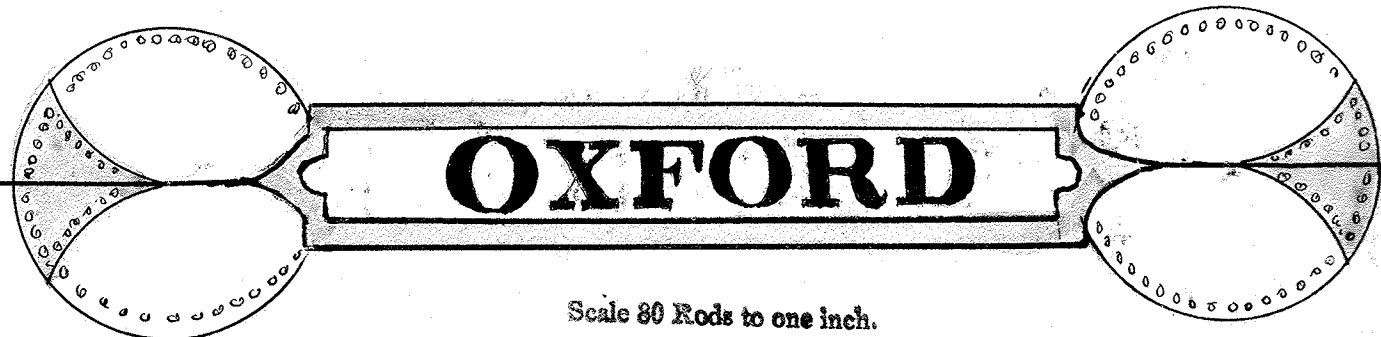
OXFORD

Q^r

Range 7 & SOUTH HALF OF 10 Scale 80 Rods to one inch.

& NORTH PART OF Township. 9





OXFORD

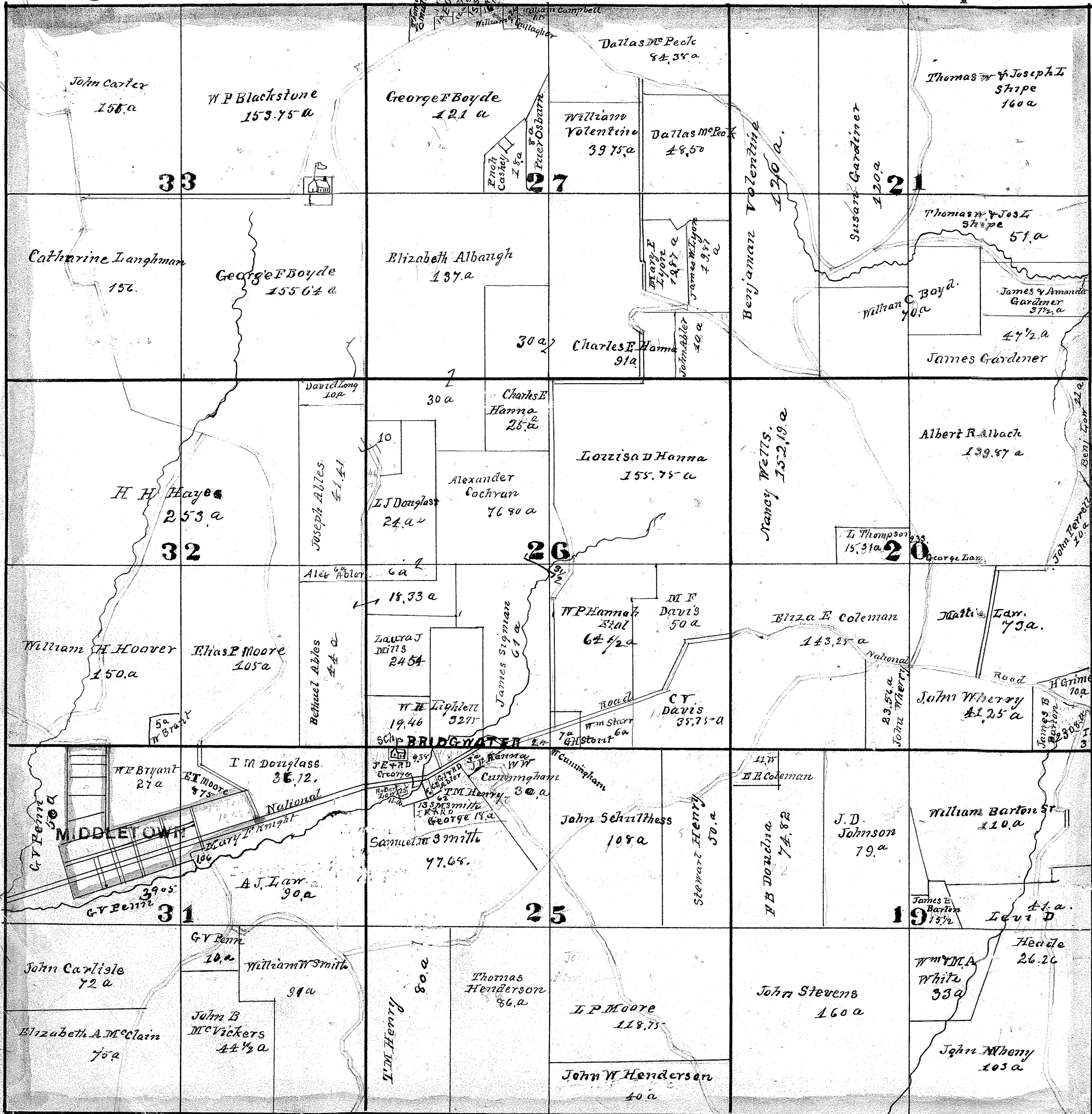
Scale 80 Rods to one inch.

2d

Qr

Range 7 & SOUTH HALF OF 10

& NORTH PART OF Township. 9



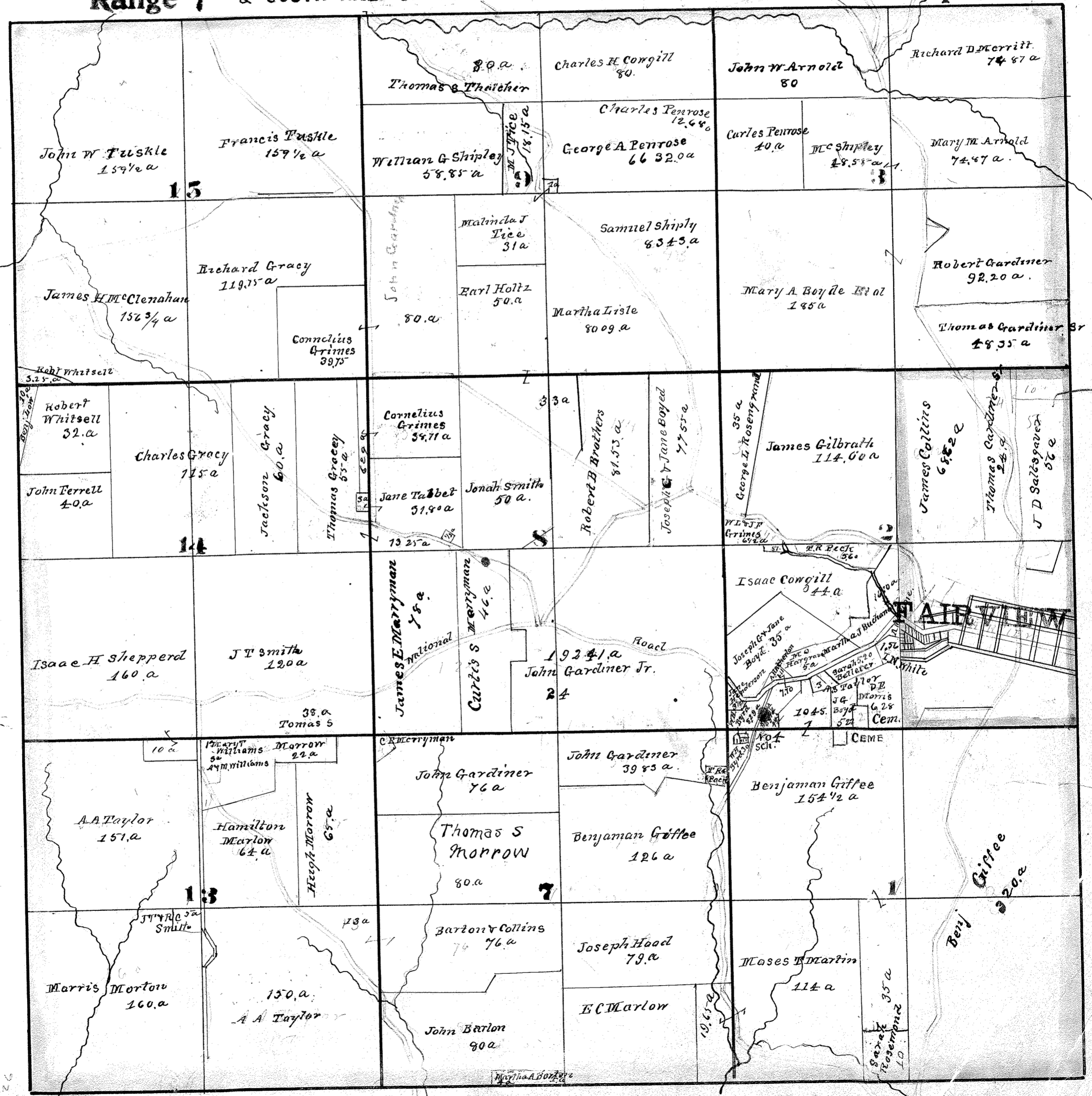
OXFORD

Scale 90 Rods to one inch.

1st

Range 7 & SOUTH HALF OF 10

& NORTH PART OF Township. 9



119
26.26
103
162.26